



girl scouts
of southern illinois

Council Connections

February 6, 2023
Recording in Process

WELCOME
Service Unit Managers

Agenda

1. Girl Scout Promise
2. Product Program
3. Volunteer Resources
4. Program Engagement
5. Retail and Customer Experience
6. Community Engagement



It's Girl Scout Cookie™ Time!



the USA. ®, ™

PRODUCT PROGRAM

PRODUCT PROGRAM

Cookie Program Reminders:

- Cupboard Orders:
 - ✓ Uploaded in eBudde by 11:59PM on Sundays.
- Direct Shipped Cookies:
 - ✓ Open in DOC Monday, 2/27 – Sunday, 3/5
- Race to the Rally:
 - ✓ Every girl with 10 donation cookie packages through DOC in a week will be entered in drawing for customized Bluetooth speaker.
- Rally Finale:
 - ✓ February 27 – March 5, girls who sell 50+ boxes through DOC direct shipped will earn mini crossbody sling bag and custom patch.
- Troop Reward Selections:
 - ✓ Due by Tuesday, 3/7 – Service Units have until 3/9 to submit.





VOLUNTEER RESOURCES

VOLUNTEER RESOURCES

Adult Training

CPR/AED/First Aid:

Tuesday, February 21st in Glen Carbon, IL

Monday, March 20th in Mt. Vernon, IL

Wednesday, March 29th in Glen Carbon, IL

Tuesday, April 11th in Marion, IL

Thursday, April 20th in O'Fallon, IL

Tuesday, September 5th in Marion, IL

Monday, September 18th in Mt. Vernon, IL

Camping Out Training

Sunday, March 11th-Camp Torqua in Edwardsville, IL

Saturday, March 18th-Little House in Mt. Vernon, IL

Saturday, April 29th-Washington Park in Robinson, IL

Archery

Sunday, March 11th-Camp Torqua in Edwardsville, IL

Sunday, June 11th – Freedom Farm in Freeburg, IL

Flat Water Canoe

Sunday, June 11th – Freedom Farms in Freeburg, IL

Moving Water Canoe

Saturday, July 15th – Meramec River, MO

Saturday, August 26th – Meramec River, MO

Youth Mental Health First Aid

Saturday, March 18th in Glen Carbon, IL

Sunday, April 16th in Glen Carbon, IL

A blue square logo with the words "Training Event" in white, bold, sans-serif font. The text is centered and overlaid on a faint, light blue circular graphic that resembles a target or a compass rose.

**Training
Event**

VOLUNTEER RESOURCES

Volunteer Training Summit

- Saturday, April 15th – 1:00 – 5:00 PM, Collinsville, IL
- [Registration](#) open through April 3
- Cost: \$10 (single fee)
- [Tell Us How You “Take the Lead” Survey](#)
- FREE 2023 VTS Patch for all & Service Unit with the most volunteers in attendance will be 100% reimbursed.
- Adult Financial Assistance is now available; new application will be found under [Financial Assistance](#) and [Forms and Documents](#) **once** published (later in Feb)

New Leader Orientation/Onboarding Updates:

- GSUSA’s Successful Leader Series-(formally known as Foundations 1-4) redone into smaller training pieces

Service Unit Leader Enrichments

- Short & Snappy
 - Feb – Girl Scout Week
 - March – Bridging
 - April – Summer Fun Activities
 - May – Outdoor Activities

VOLUNTEER RESOURCES

gsLearn:

Upcoming Training Release:

416 (GSofSI Council) Understanding Your Role

For each volunteer role serving in the following roles & to be completed annually:

SU Manager

SU Registrar

SU Treasurer

SU Product Manager (NCM/Cookies)

SU Troop Organizer

Cookie Cupboard Manager

Event Helper

Juliette Adult

Delegate/Alternate Delegate

Troop Leader/Co Leader

Troop Treasurer

Troop Product Manager (NCM/Cookies)

Troop Helper

VOLUNTEER RESOURCES

Important Note: PDF copies of these roles will be available for download under the [Onboarding Resources](#) once published (later in Feb)

416 (GSofSI Council) Service Unit Registrar Training

416 (GSofSI Council) Looker

Troop Helper Role

This new role is for any adult volunteer who regularly, or episodically, helps out with a troop's activities. For example, all adults attending/helping with a day camp or overnight trip, adult volunteers attending troop meetings, adult volunteers who drive girls during a trip or outing, and any adult volunteer who helps with troop events needs to have an active membership (which includes a background check, completion of the Understanding Your Role gsLearn course, and completion of the Illinois Mandated Reporter (ILMR) training) and be in the Troop Helper role. Make sure you add this role via your MYGS portal ([click here](#) for a helpful video tutorial). If you have any questions about this role, please reach out to your Service Unit Manager or contact Customer Care.

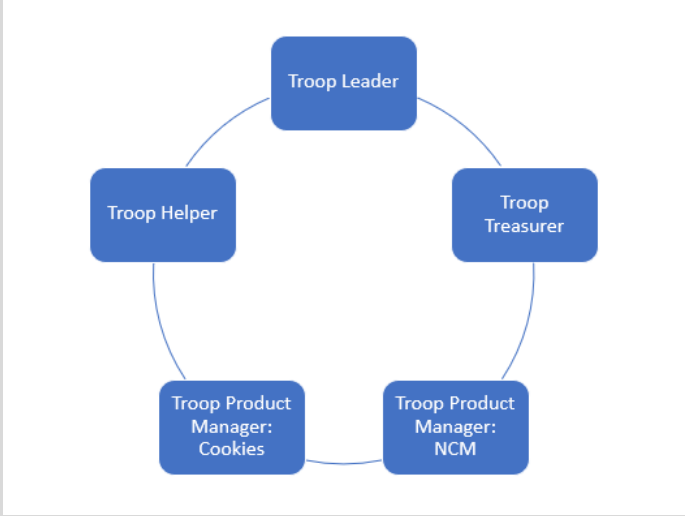
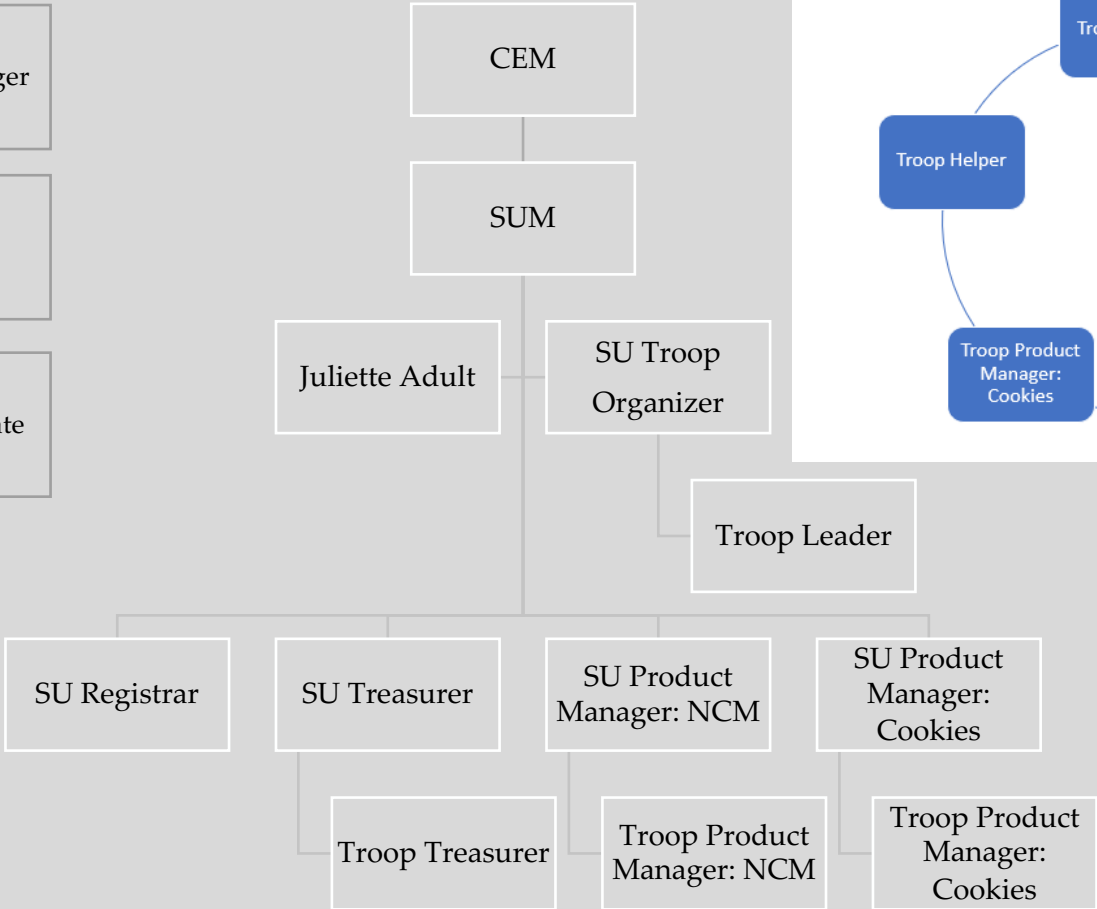
Driver Form

Volunteer Organization Chart

Cupboard Manager

Event Helper

Delegate/Alternate



VOLUNTEER RESOURCES

Adult Awards

Decisions are in!

Email to Nominators/Endorsers sent week of 1/30/2023

If expecting a notification, but haven't received one, email Customer Care

Email to congratulate recipients will be sent week of 2/13/2023

Separate electronic invite to recipients to be mailed in March

[President's Volunteer Service Award](#)

Qualifying service and applications from Oct 1st-Feb 28th will be honored at the Recognition of Excellence ceremony. Qualifying service and applications from Mar 1st-Sept 30th will be honored at the ceremony the following membership year.

Updating Highest Awards and Adult Awards page with information

Application link is [here](#).

GSofSI PVSA Log Sheet is [here](#).



PROGRAM ENGAGEMENT

PROGRAM ENGAGEMENT

- **March 4 and March 19 -- CIT Workshop (Camp Torqua)**

Seniors and Ambassadors

Cost: \$25

Deadline: 2/20 and 3/6

- **March 5 and April 8 - - PAT Workshop (Camp Torqua)**

Cadettes

Cost: \$25

Deadline: 2/20 and 3/27

- **March 21 - - Council Trip Information Night (Virtual)**

Adults

Free

Deadline: 3/20

Council Programs 



PROGRAM ENGAGEMENT

- **March 25 – Girl Scouts Take Over Campus (SIU-Carbondale)**

Cadettes - Ambassadors

Cost: \$38

Deadline: 3/6

- **April 15-16 - - Brownie Campout(Camp Torqua)**

Brownies

Cost: \$20

Deadline: 4/3

- **April 21-22 - - Older Girl Leadership Weekend (Camp Torqua)**

Cadettes - Ambassadors

Cost: \$35

Deadline: 4/3



PROGRAM ENGAGEMENT

- **April 22 – Southern Illinois Road Trip**

Brownies - Cadettes

Cost: \$38

Deadline: 3/27

- **April 29 - - Outdoor Explore 'n More (Waterloo)**

All Levels

Cost: \$38 (girls); \$10 (adults)

Deadline: 4/10



PROGRAM ENGAGEMENT

Summer Camp

Camp Open Houses: March 15 – virtual and March 19 – at Camp Torqua

Day Camp Opportunities: Edwardsville, Effingham, Highland, Freeburg, O'Fallon, Waterloo, Centralia

Resident Camp Opportunities: Camp Torqua, Camp Ondessonk and Land for Learning River Expedition

Summer Camp Employment: Opportunities available for applicants 18 yrs or older. <https://www.gsofsi.org/en/discover/our-council/career-opportunities.html>

Day
Camp

gsofsi

PROGRAM ENGAGEMENT

Important Deadlines:

February 28 – All Silver Final Reports must be submitted to be recognized at this year’s Recognition of Excellence ceremony.

February 28 – All Outstanding Graduating Girl Scout Scholarship applications and reference forms must be submitted to be eligible for consideration.

April 3 – Deadline Engage to Make a Change Challenge community service projects
<https://www.gsofsi.org/en/discover/about/about-gsofsi/community-service.html>

We Need Your Help:

Please remind your older girl troop leaders to advise their girls that have Gold Award interviews scheduled to be respectful of their commitments. The Gold Award committee is made up of volunteers that offer hours of service monthly to interview and work with girls. We have had several “no shows” over the past few months.

PROGRAM ENGAGEMENT

Travel

As you start making your summer plans, don't forget to review the information in the gsLearn Traveling with Troops training and at

<https://www.gsofsi.org/en/members/for-volunteers/volunteer-essentials/adult-training-and-resources.html>





**CUSTOMER
CARE**



RETAIL

RETAIL

February Special – “I Love My Girl Scout” Shirt

- 25% off in-store and online
- Two colors (Green or Navy)



A woman wearing a green Girl Scout cap and a green t-shirt with a white heart and the text "I MY GIRL SCOUT" is smiling. She is holding a navy blue t-shirt with a white heart and the text "I MY GIRL SCOUT". The background shows a retail store with various items on display.

25% OFF
Online and In-Store!

CUSTOMER CARE

Reminders:

As of Feb 1st, we had over 750 adult members without a completed BGC on file. Customer Care will be sending emails containing the link, over the next two weeks. Please remind all troop leaders that this is now part of becoming an adult member and will be required to attend any activity where girls are present.

Please contact Customer Care or your Community Engagement Manager, if you are unclear about the GSEF policies. GSEF can reduce the cost of resident camp by 50%, up to \$300.

Community Engagement



All Fun.
No Filter.

COMMUNITY ENGAGEMENT

MY23 Membership Goals and Update

Traditional Troop Girls = **5200**; Adults = **2800**

- Girls = 4,762 girls or 92% to MY23 goal

- Adults = 2,906 adults or 104% to MY23 goal

Girl Scouts of Southern Illinois Traditional Girls and Adults Progress to MY23 Goals													
Area	Service Unit Name	New Girls	Retained Girls	YTD Total Girls	Total Girl Goal	Girls Needed to Goal	Total Girls % to Goal	New Adults	Retained Adults	YTD Total Adults	Total Adult Goal	Adults Needed to Goal	Total Adults % to Goal
Area02	SU007_Bond_Fayette_County	29	53	82	85	3	96%	11	34	45	45	-	100%
Area02	SU101_Aston_Croftroy_Wood_River_Roxana	35	121	156	200	44	78%	24	104	128	120	2	92%
Area02	SU102_Cranite_City_Madison_Venice	13	77	90	105	15	86%	16	82	98	85	(13)	105%
Area02	SU105_Jersey_Calhoun_County	34	103	137	150	13	91%	14	36	50	55	5	91%
Area02	SU106_Bethalto	27	31	58	55	(3)	105%	9	21	30	25	(5)	120%
Area03	SU108_Edwardsville_Glen_Carbon	48	216	264	400	136	66%	27	196	222	258	36	87%
Area03	SU109_Troy_St_Jacob	48	104	152	135	(17)	113%	31	101	132	120	(12)	110%
Area03	SU110_Highland	17	75	92	100	8	92%	8	65	73	65	(8)	112%
Area03	SU111_Cottleville_Coveyville_Maryville	18	52	70	100	30	70%	9	50	59	55	(4)	107%
Area03	SU202_ClinClair	46	137	183	230	47	80%	30	106	136	140	4	97%
Area04	SU201_Fallon_Shiloh_Fairview	118	319	437	450	13	97%	39	205	244	250	(14)	114%
Area04	SU207_Bellville_Swansea	130	248	378	415	37	91%	102	203	305	250	(55)	122%
Area04	SU209_Milstead_Columbia_Dupo_Smithton	78	123	201	195	(6)	103%	39	62	101	85	(16)	119%
Area04	SU210_New_Athens_Marissa_St_Libory_Freiburg	21	54	75	85	10	88%	5	36	41	45	4	97%
Area05	SU211_Waterloo	15	106	121	135	14	90%	12	93	105	90	(15)	117%
Area05	SU309_Centralia	15	51	66	90	24	73%	8	31	39	38	(1)	103%
Area05	SU315_Canton_Washington_County	33	41	74	60	(14)	123%	16	27	43	40	(3)	108%
Area05	SU321_East_Marion_County	16	46	62	80	18	78%	9	31	40	35	(5)	114%
Area05	SU302_Jefferson_County	18	97	115	140	25	82%	8	52	60	55	(5)	109%
Area05	SU354_Perry_County	26	59	85	80	(5)	106%	20	40	60	45	(15)	133%
Area07	SU207_Jackson_County	15	42	57	85	28	67%	15	49	64	60	(4)	107%
Area07	SU242_East_Williamson_County	33	14	107	110	3	97%	8	52	60	65	5	92%
Area07	SU251_North_Randolph_County	33	63	96	80	(16)	120%	5	24	29	30	1	97%
Area07	SU266_South_Randolph_County	47	87	134	115	(19)	117%	8	66	74	75	1	99%
Area07	SU290_West_Williamson_County	39	107	146	150	4	97%	12	55	67	70	3	96%
Area08	SU303_Johnson_Pope_County	11	39	50	60	10	83%	1	13	14	10	6	70%
Area08	SU343_Massac_County	19	29	48	45	(3)	107%	6	23	29	25	(4)	116%
Area08	SU366_Shawnee	24	22	46	60	14	77%	13	13	26	25	(1)	104%
Area08	SU373_Union_Pulaski_Alexander_County	13	58	71	70	(1)	101%	3	33	36	40	4	90%
Area08	SU385_Wayne_Hamilton_White_County	35	86	121	135	14	90%	17	64	81	70	(11)	116%
Area09	SU101_Clay_County	14	38	52	50	(2)	104%	2	20	22	25	3	88%
Area09	SU398_Lawrence_Wilshash_Edwards_County	17	51	68	95	27	73%	8	29	37	35	(2)	106%
Area09	SU351_North_Franklin_County	29	129	158	150	(8)	105%	5	44	47	45	(2)	104%
Area09	SU363_Richland_County	13	47	60	80	20	75%	5	13	18	20	2	90%
Area07	SU387_West_Frankfort	15	22	37	50	13	74%	5	20	25	30	5	83%
Area10	SU318_Ettringham_County	34	95	129	125	(4)	103%	9	81	90	90	0	100%
Area10	SU321_Western_Coles_Cumberland_County	51	83	134	140	6	96%	25	55	80	75	(5)	107%
Area10	SU322_Eastern_Coles_County	44	45	89	70	(19)	127%	13	32	45	40	(5)	113%
Area10	SU331_Edge_Clarke_County	14	76	90	80	(10)	113%	1	32	33	30	(3)	109%
Area10	SU344_Crawford_Jasper_County	34	88	122	140	18	87%	10	38	48	45	(3)	107%
COUNCIL TOTALS*		1,318	3,444	4,762	5,200	438	92%	645	2,261	2,906	2,800	(106)	104%

*Council Totals show the number of unique individuals and may not equal the actual column total: some members participate in multiple SUs.



COMMUNITY ENGAGEMENT

Service Unit Meeting Reminder

- Service Unit Meetings should be conducted monthly either in-person, virtual or hybrid depending on the needs of your troop volunteers. If for some reason, you, as the Service Unit Manager, can not conduct a scheduled monthly meeting, please notify your Community Engagement Manager, who will step in to facilitate those meetings. Meetings should not be cancelled for this reason.

Girl Scout Week

- GS Week Proclamations (Digital and Physical Copies available)
- Faith-Based Bulletin Inserts (Available while supplies last)



COMMUNITY ENGAGEMENT

Early Bird Patch Design Contest

- **Deadline's today!!!**
- **18 designs selected**
- **Open for voting via social media week of February 20th**

Thinking SPRING??!!





GSofSI 2023 Annual Meeting Saturday, April 15, 2023

Registration Open

2023 GSofSI Annual Meeting will be held at the
Collinsville Gateway Convention Center
with registration starting at 8:30am &
Call to Order Starting at 9:30am.
Lunch will be served immediately
after the conclusion of the meeting.

GOVERNANCE

Winter Town Hall Meeting

Tuesday, February 7 – 6:30 PM

Open to all volunteers. No pre-registration required.

Topic: GSofSI Town Hall Meeting with Council Leadership

Time: Feb 7, 2023 06:30 PM Central Time (US and Canada)

Join Zoom Meeting

<https://us06web.zoom.us/j/85496125955?pwd=UVFtSlhJMk55MUt5N3pRVjZEMzJBZz09>

Meeting ID: 854 9612 5955

Passcode: 704092



QUESTIONS?

THANK YOU!

Next Meeting: March 6, 2023

